



BA IN POPULAR MUSIC

MT931 Popular Music – Electric Guitar

MT932 Popular Music – Electric Bass

MT933 Popular Music – Keyboards

MT934 Popular Music – Drums

MT935 Popular Music – Voice

Sample Entrance Paper

You will have to use this paper along with the audio recording available at this YouTube link. Repeats and suitable breaks have been inserted so you can start and try the paper as it runs. You can stop and start as many times as you like.

<https://youtu.be/zIEZCF0WOHM>

You should print this document and use a 2B pencil to write your answers

Answer all question

Read Question 1 before the recording commences. When ready *PRESS PLAY*

1. In the boxes below, insert an x in the correct cell to indicate whether the chords played to you are major, minor or diminished.
 - Each chord will be played **3** times with one bar of 4/4 between repetitions
 - There will be two bars of 4/4 before each new chord

Chord	Major	minor	diminished
1			
2			
3			
4			
5			
6			
7			
8			
9			
10			

5 marks

Read Question 2 during this pause.

2. You will hear **two** 4-bar rhythmic segments. Each segment will be played **4** times.
 - There will be a 2-bar count-in before the **first** playing of each segment and a 1-bar count-in before each repetition
 - There will be a longer pause between parts (i) and (ii) of this question
 - Notate each segment on the rhythm lines below

(i)

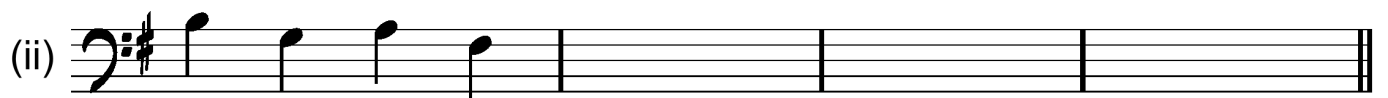
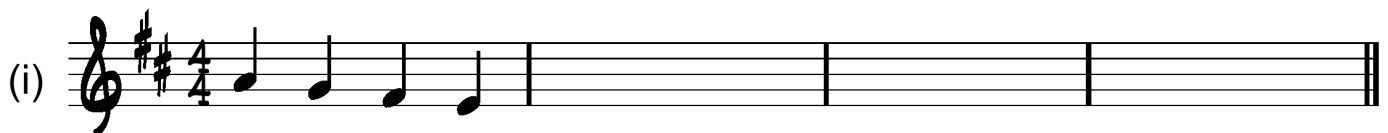
(ii)

15 marks

Read Question 3 during this pause.

3. You will hear **two** 4-bar melodies. Each melody will be played **4** times.

- You will hear the tonic chord and arpeggio, followed by a one-bar count-in, before each playing
- There will be a longer pause between parts (i) and (ii) of this question
- The first bar of each melody is given. Complete the melodies, taking note of the clef and key in each one.



20 marks

End of Aural Section. Please complete the written part of the exam now.

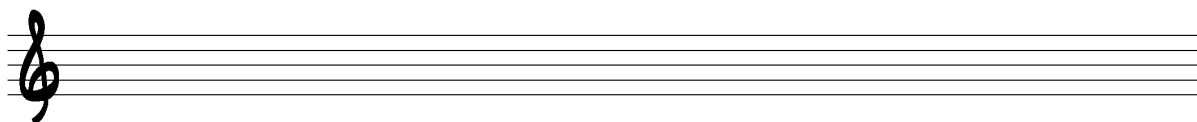
Notational Skills

4. On the staves below, notate the indicated scales, one octave ascending, using quarter notes/crotchets. **Observe changes in clef** and use accidentals, **not** a key signature. Follow the example of the first scale which has been completed for you.

G major



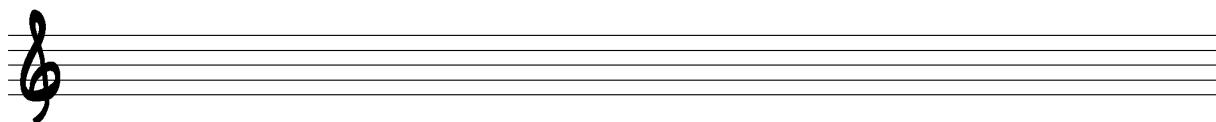
E major



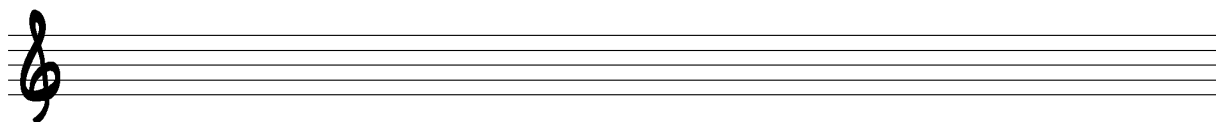
A \flat major



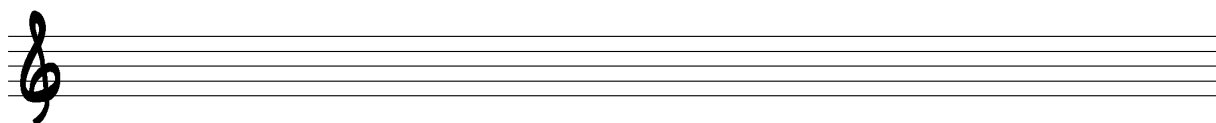
F major



B minor [harmonic]

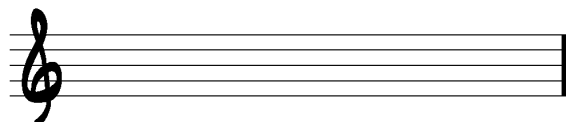


G minor [melodic]



15 marks

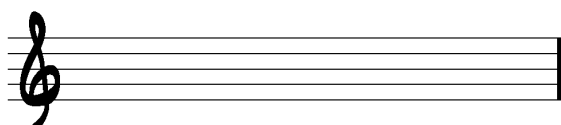
5. On the staff below, notate each of the indicated triads. Use accidentals, **not** a key signature. **Note the clef** in each case.



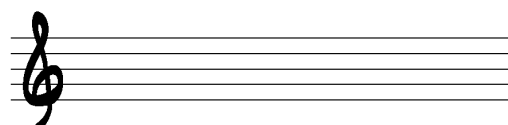
Chord vi in D major



Chord V in B \flat major



D7



Chord V in A minor

10 marks

6. Name each of the numbered chords below. In the case of an inversion, state its position.

Chord 1: _____

Chord 2: _____

Chord 3: _____

Chord 4: _____

Chord 5: _____

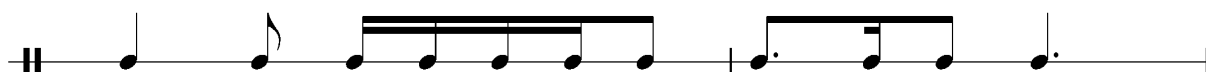
10 marks

7. Look at the notated rhythms below and complete each bar with appropriate rests so that it complies with the time signature.



10 marks

8. Add the correct time signature to the notated passage below.



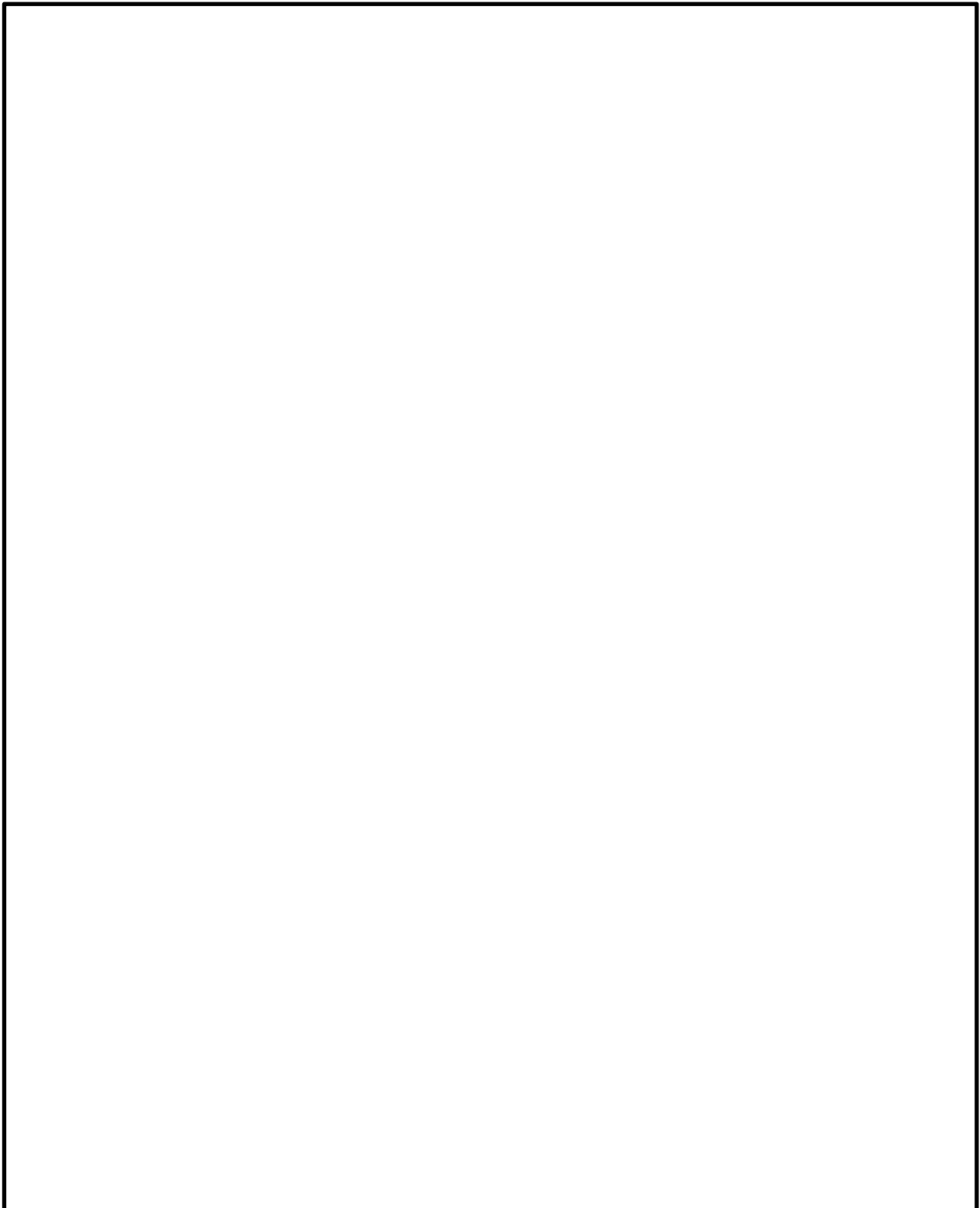
5 marks

9. Choose an artist and describe, **briefly**, how you, as a musician and performer have been influenced by that artist. Describe the style/genre of your chosen artist and name three songs associated with or written by that artist.

Use the blank page overleaf (200 to 300 words)

10 marks

Answer to Question 9.

A large, empty rectangular box with a black border, intended for the student to write their answer to Question 9. The box occupies most of the page's vertical space.